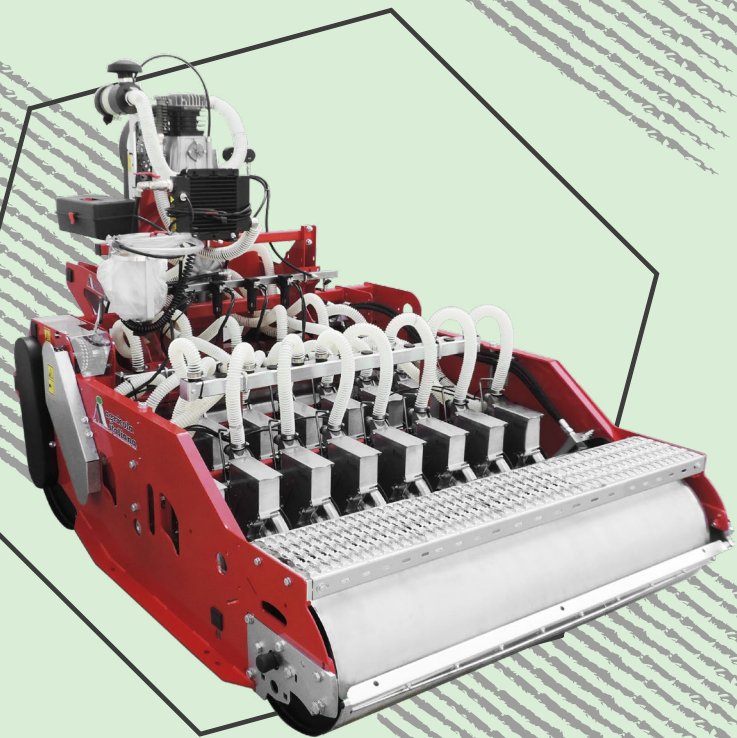
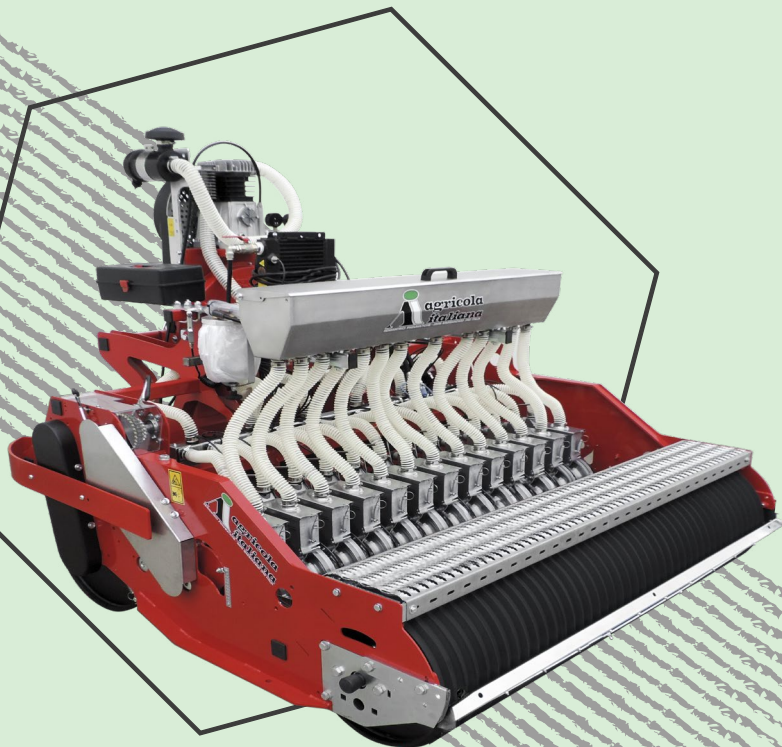




◆ AI-840-SN



Il modello AI-840, grazie a singola o doppia barra telaio, è in grado di seminare con un interfila molto ridotto.

Thanks to a single or double bar frame, AI-840 allows for reduced spacing between lines.

Grâce à une unique or double barre de châssis, le modèle AI-840 est en mesure de semer avec un écartement très réduit entre les lignes.

Das Modell AI-840 ist dank einer einzelnen or doppelten Rahmenschiene in der Lage, mit einem sehr geringen Reihenabstand zu säen.

El modelo AI-840, gracias a una o doble barra-bastidor, permite sembrar con una distancia entre hileras más reducida.

IT

EN

FR

DE

ES

◆ AI-840-SNT

PER IL CATALOGO GENERALE
E LE SCHEDE PRODOTTO,
SCANNERIZZA IL QR CODE



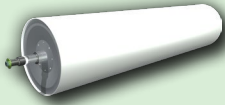
FOR THE GENERAL CATALOG AND
PRODUCT FLYERS, SCAN THE QR CODE

SEMINATRICE PNEUMATICA DI PRECISIONE PER ORTAGGI
PNEUMATIC PRECISION SEEDER FOR VEGETABLES

AI-840

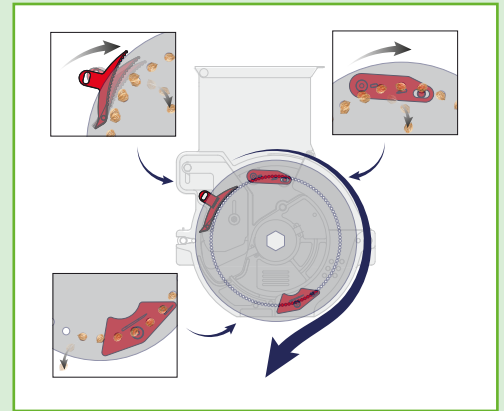
RULLI MOTRICI / ROLLERS

- IT** Coppia di rulli motrici, regolabili in modo indipendente.
EN Two rollers, adjustable independently.
FR Deux rouleaux, réglables indépendamment.
DE Zwei individuelle einstellbare Rollen.
ES Dos rodillos, independientemente ajustables.



SISTEMA PNEUMATICO / PNEUMATIC SYSTEM

- IT** Sistema pneumatico per la distribuzione e la pulizia del seme.
EN Pneumatic system for the distribution and the cleaning of seeds.
FR Système d'air comprimée pour la distribution et le nettoyage de la graine.
DE Pneumatisches System für die Verteilung und die Reinigung des Saatguts.
ES Sistema neumático para la distribución y la limpieza de la semilla.



DISTRIBUZIONE SEME / SEED DISTRIBUTION

- IT** Unità di semina pneumatica. Precisa ed affidabile.
EN Pneumatic sowing unit. Precise and reliable.
FR Unité de semis pneumatique. Précise et fiable.
DE Präzise und zuverlässige pneumatische Aussaateneinheit.
ES Unidad de siembra neumática. Precisa y fiable.

DISTANZE

SPACING

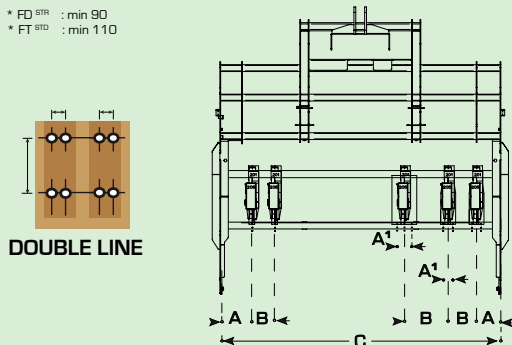
legenda
legend

- | | | | | |
|---------------------------------|--------------------------------|--------------------------------|------------------------------------|--------------------------------|
| IT | EN | FR | DE | ES |
| FS = fila singola | single line | ligne simple | einzelne Reihe | hilera individual |
| FD = fila doppia | double line | ligne double | doppelte Reihe | doble hilera |
| FT = fila tripla | triple line | ligne triple | dreifache Reihe | triple hilera |
| STD = unità di semina standard | standard sowing unit | unité de semis standard | standard-Säeinheit | unidad de siembra estándar |
| STR = elemento stretto | narrow element | élément étroit | schmales Element | elemento estrecho |
| LARGE = +20mm con ruote 6.00.16 | +20mm for 6.00.16 drive wheels | +20mm boîte de vitesse 6.00.16 | +20mm verstärktes Getriebe 6.00.16 | +20mm cambio reforzado 6.00.16 |

AI-840-SN

	A	A'	B	C	D ^{LARGE}
FS ^{STD}	80	-	110	1400/1800	155
FS ^{STR}	80	-	90	1400/1800	155
FD ^{STD}	100	70	140	1400/1800	155
FD ^{STR}	100	50	100*	1400/1800	155
FT ^{STD}	100	70	140**	1400/1800	155

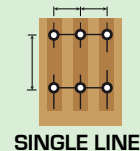
* FD^{STR} : min 90
 * FT^{STD} : min 110



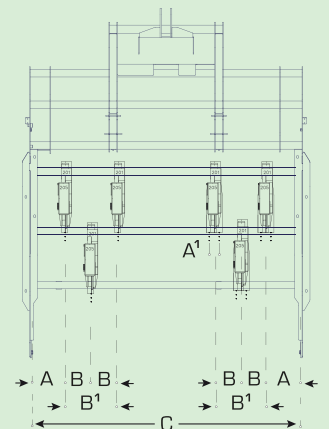
DOUBLE LINE

AI-840-SNT

	A	A'	B	B'	C
FS ^{STD}	80	-	55	110	1400/1800
FS ^{STR}	80	-	45	90	1400/1800
FD ^{STD}	100	70	65	140	1400/1800
FD ^{STR}	100	50	45	100	1400/1800



SINGLE LINE



Tutte le misure sono espresse in millimetri
 All figures are in the metric system (millimeters)



CERERE S.R.L. ramo di azienda **AGRICOLA ITALIANA**
 Sede legale: Via Melone 2, Milano (MI), Italia
 Sede operativa: Via dell'Artigianato 9, zona ind. 35010 - Massanzago (PD), Italia
 Tel. +39.049.5797533 - Fax +39.049.5797756 - agricola@agricola.it



www.agricolaitaliana.it